

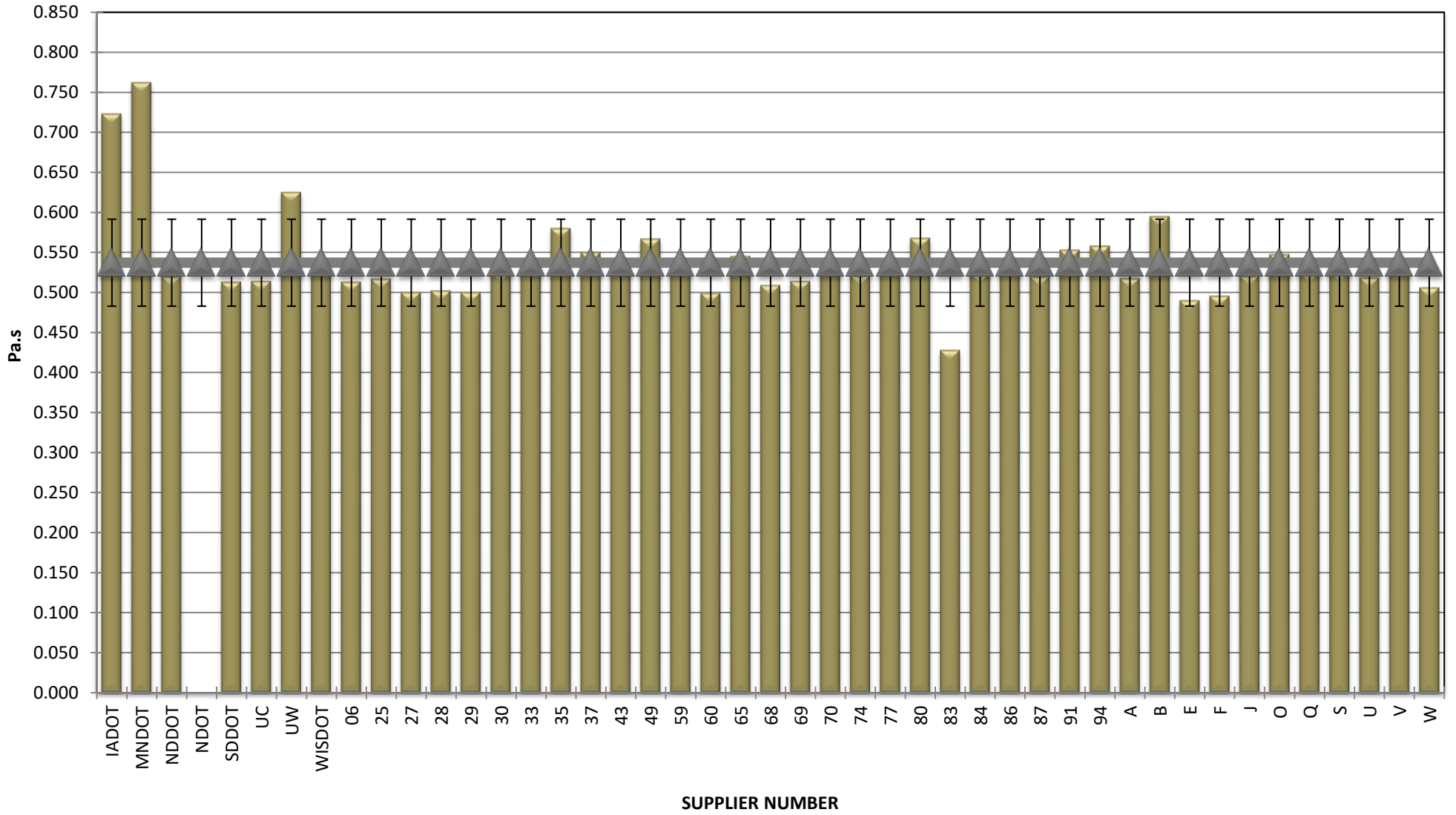


**COMBINED STATE BINDER GROUP ROUND ROBIN SUMMARY B 2021-3  
PG 58H-28**

	Rot. Visc.	ODSR	RTFO DSR	PAVDSR	Mass Loss	S-value	m-value	Jnr @ 100 Pa	% Rec. 100 Pa	Jnr @ 3200 Pa	% Rec. @ 3200 Pa
<b>A</b>											
03	0.516	3.03		4,383	0.756	223	0.307	0.328	59.00	0.453	47.00
19	0.519	3.01		4,556	0.749	231	0.303	0.315	59.90	0.434	48.20
51	0.517	2.98		4,667	0.760	227	0.303	0.315	59.80	0.435	48.10
54	0.517	2.98		4,344	0.735	233	0.300	0.292	62.30	0.398	51.70
97	0.518	3.00		4,591	0.757	222	0.306	0.332	59.20	0.457	47.30
<b>AVERAGE</b>	<b>0.517</b>	<b>3.00</b>		<b>4,508</b>	<b>0.751</b>	<b>227</b>	<b>0.304</b>	<b>0.316</b>	<b>60.04</b>	<b>0.435</b>	<b>48.46</b>
<b>B</b>											
01	0.598	3.45		4,830	0.685	214	0.304	0.263	61.42	0.346	52.12
17	0.590	3.41		4,940	0.684	224	0.302	0.283	61.09	0.394	49.48
45	0.597	3.53		4,690	0.699	206	0.300	0.285	61.14	0.394	49.68
<b>AVERAGE</b>	<b>0.595</b>	<b>3.46</b>		<b>4,820</b>	<b>0.689</b>	<b>215</b>	<b>0.302</b>	<b>0.277</b>	<b>61.22</b>	<b>0.378</b>	<b>50.43</b>
<b>E</b>											
15	0.480	2.96		4,444	0.667	222	0.310	0.310	61.00	0.459	47.90
39	0.490	2.96		4,330	0.680	227	0.310	0.326	59.40	0.466	47.70
89	0.500	2.97		3,898	0.684	229	0.312	0.314	61.00	0.465	48.00
<b>AVERAGE</b>	<b>0.490</b>	<b>2.96</b>		<b>4,224</b>	<b>0.677</b>	<b>226</b>	<b>0.311</b>	<b>0.317</b>	<b>60.47</b>	<b>0.463</b>	<b>47.87</b>
<b>F</b>											
02	0.492	3.06		4,996	0.743	209	0.295	0.317	60.90	0.449	48.50
11	0.493	3.04		4,918	0.717	211	0.299	0.339	60.38	0.493	46.64
34	0.498	3.13		4,565	0.711	214	0.306	0.337	59.91	0.486	46.36
48	0.494	3.02		4,753	0.709	231	0.296	0.333	61.60	0.488	47.69
56	0.494	2.99		5,151	0.683	233	0.297	0.358	59.91	0.506	47.06
62	0.500	2.87		4,840	0.730	229	0.302	0.330	59.83	0.482	45.78
66	0.500	2.97		5,061	0.688	233	0.302	0.319	59.32	0.439	47.62
75	0.493	3.01		4,860	0.716	231	0.299	0.275	61.89	0.400	49.58
90	0.497	3.01		5,117	0.689	237	0.298	0.307	60.46	0.429	48.41
99	0.495	3.04		5,500	0.736	233	0.301	0.307	60.65	0.434	48.30
<b>AVERAGE</b>	<b>0.496</b>	<b>3.01</b>		<b>4,976</b>	<b>0.712</b>	<b>226.1</b>	<b>0.300</b>	<b>0.322</b>	<b>60.49</b>	<b>0.461</b>	<b>47.59</b>
<b>J</b>											
05	0.545	3.04		4,690	0.845	238	0.295	0.286	61.46	0.399	49.58
08	0.535	2.84		4,870	0.736	231	0.299	0.310	61.04	0.441	48.31
10	0.513	3.19		4,864	0.753	219	0.309	0.258	62.95	0.385	49.88
14	0.511	3.06		4,342	0.756	226	0.310	0.268	63.45	0.414	49.33
22	0.511	3.10		4,398	0.762	225	0.306	0.267	62.46	0.392	49.71
31	0.535	2.93		4,960	0.776	221	0.294	0.272	61.86	0.380	50.15
36	0.510	2.84		4,651	0.784	228	0.305	0.282	62.51	0.429	48.55
41	0.538	2.96		4,710	0.811	235	0.297	0.308	60.29	0.424	48.76
44	0.510	2.93		4,472	0.737	223	0.306	0.267	63.13	0.390	50.98
52	0.510	3.15		4,613	0.789	223	0.304	0.272	63.05	0.395	50.92
61	0.512	2.98		4,538	0.747	221	0.310	0.267	63.34	0.409	49.69
<b>AVERAGE</b>	<b>0.521</b>	<b>3.00</b>		<b>4,646</b>	<b>0.772</b>	<b>226.3636</b>	<b>0.303</b>	<b>0.278</b>	<b>62.32</b>	<b>0.405</b>	<b>49.62</b>
<b>O</b>											
76	0.540	2.96		3,519	0.650	226	0.321	0.291	59.84	0.403	47.87
85	0.555	3.26		4,760	0.825	233	0.302	0.289	61.76	0.397	50.66
<b>AVERAGE</b>	<b>0.548</b>	<b>3.11</b>		<b>4,140</b>	<b>0.738</b>	<b>230</b>	<b>0.312</b>	<b>0.290</b>	<b>60.80</b>	<b>0.400</b>	<b>49.27</b>
<b>Q</b>											
21	0.518	3.11		4,528	0.787	235	0.325	0.271	61.78	0.361	52.18
23	0.528	2.93		4,535	0.770	232	0.323	0.279	64.30	0.390	53.19
73	0.528	2.95		4,191	0.793	222	0.322	0.242	65.90	0.324	57.10
93	0.523	2.94		4,330	0.837	230.000	0.321	0.344	65.51	0.561	53.40
<b>AVERAGE</b>	<b>0.524</b>	<b>2.98</b>		<b>4,396</b>	<b>0.797</b>	<b>230</b>	<b>0.323</b>	<b>0.284</b>	<b>64.37</b>	<b>0.409</b>	<b>53.97</b>
<b>S</b>											
53	0.523	2.97		4,290	0.670	227	0.310	0.340	59.94	0.482	47.20
64	0.528	2.99		4,612	0.768	223	0.303	0.330	60.10	0.467	47.30
<b>AVERAGE</b>	<b>0.525</b>	<b>2.98</b>		<b>4,451</b>	<b>0.719</b>	<b>225</b>	<b>0.307</b>	<b>0.335</b>	<b>60.02</b>	<b>0.474</b>	<b>47.25</b>
<b>U</b>											
13	0.524	2.94		4,440	0.736	222	0.318	0.299	61.45	0.407	50.77
24	0.513	2.88		4,350	0.727	222	0.319	0.304	62.95	0.462	48.58
<b>AVERAGE</b>	<b>0.519</b>	<b>2.91</b>		<b>4,395</b>	<b>0.732</b>	<b>222</b>	<b>0.319</b>	<b>0.302</b>	<b>62.20</b>	<b>0.435</b>	<b>49.68</b>
<b>V</b>											
58	0.531	3.00		4,600	0.833	240	0.305	0.339	58.42	0.476	45.68
78	0.528	2.94		4,460	0.862	236	0.302	0.344	58.74	0.488	45.58
81	0.535	3.06		4,880	0.817	239	0.303	0.317	58.90	0.442	46.65
<b>AVERAGE</b>	<b>0.531</b>	<b>3.00</b>		<b>4,647</b>	<b>0.837</b>	<b>238.3333</b>	<b>0.303</b>	<b>0.333</b>	<b>58.69</b>	<b>0.469</b>	<b>45.97</b>
<b>W</b>											
07	0.512	3.01		4,521	0.789	233	0.307	0.274	63.70	0.420	49.20
95	0.500	3.06		4,801	0.771	223	0.312	0.286	62.20	0.429	48.20
<b>AVERAGE</b>	<b>0.506</b>	<b>3.04</b>		<b>4,661</b>	<b>0.780</b>	<b>228</b>	<b>0.310</b>	<b>0.280</b>	<b>62.95</b>	<b>0.425</b>	<b>48.70</b>
<b>Y</b>											
04	0.513	2.97		3,210	0.700	251	0.298	0.385	54.42	0.486	46.26
47	0.513	2.97		3,210	0.700	251	0.298	0.385	54.42	0.486	46.26
<b>AVERAGE</b>	<b>0.513</b>	<b>2.97</b>		<b>3,210</b>	<b>0.700</b>	<b>251</b>	<b>0.298</b>	<b>0.385</b>	<b>54.42</b>	<b>0.486</b>	<b>46.26</b>

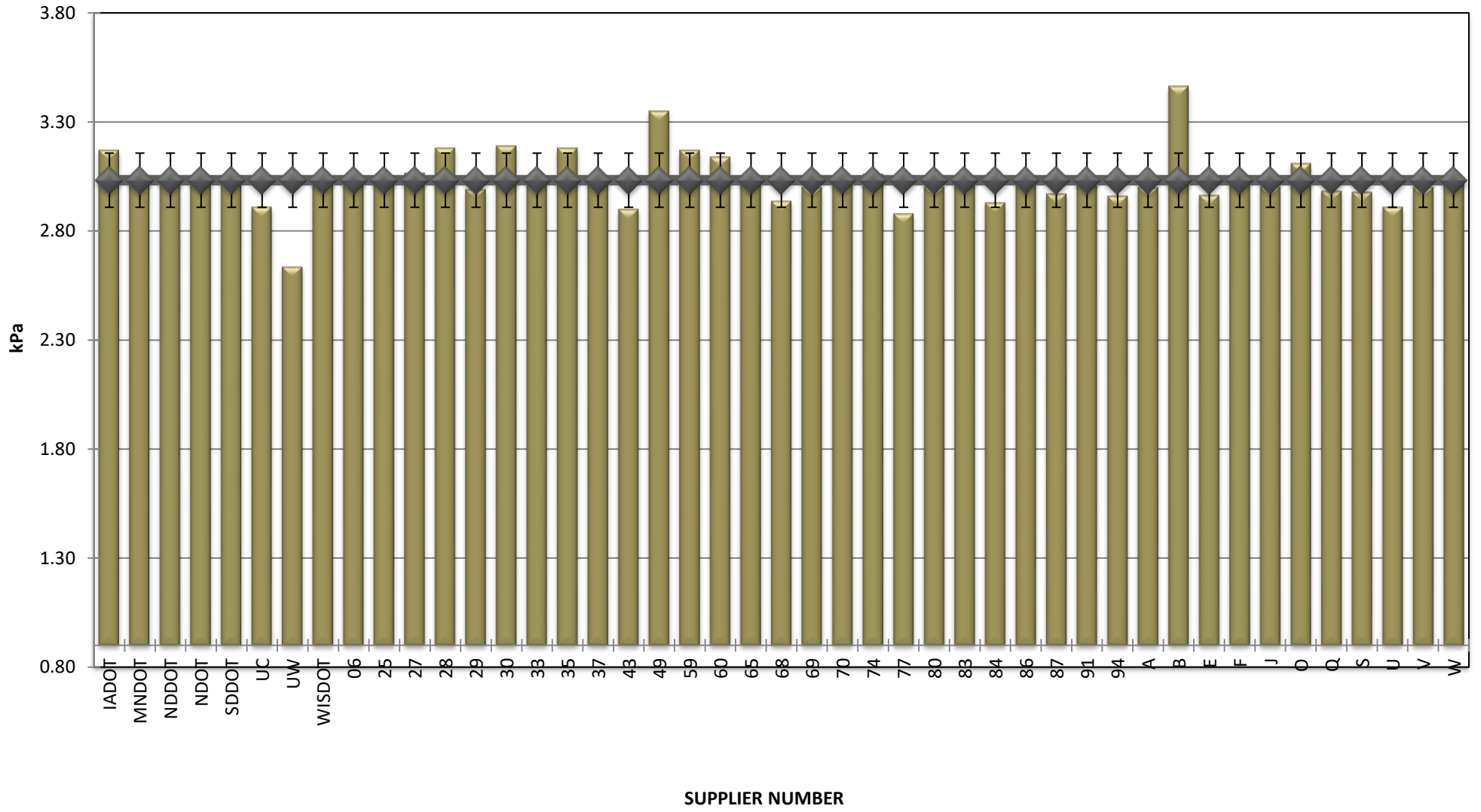
**COMBINED STATE BINDER GROUP ROUND ROBIN  
SUMMARY B 2021-3  
PG 58H-28**

**ROTATIONAL VISCOSITY**



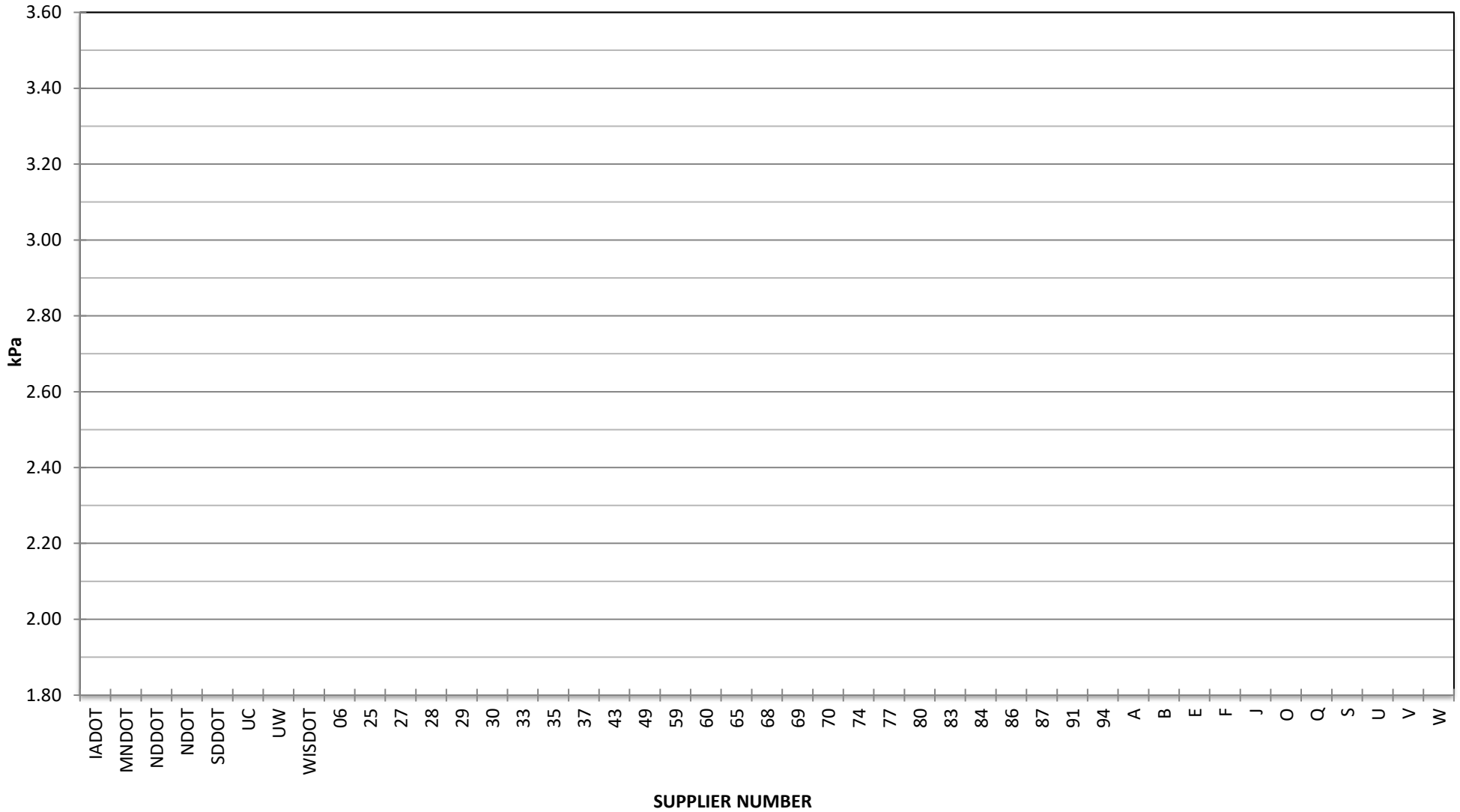
**COMBINED STATE BINDER GROUP ROUND ROBIN  
SUMMARY B 2021-3  
PG 58H-28**

**DSR - ORIGINAL**



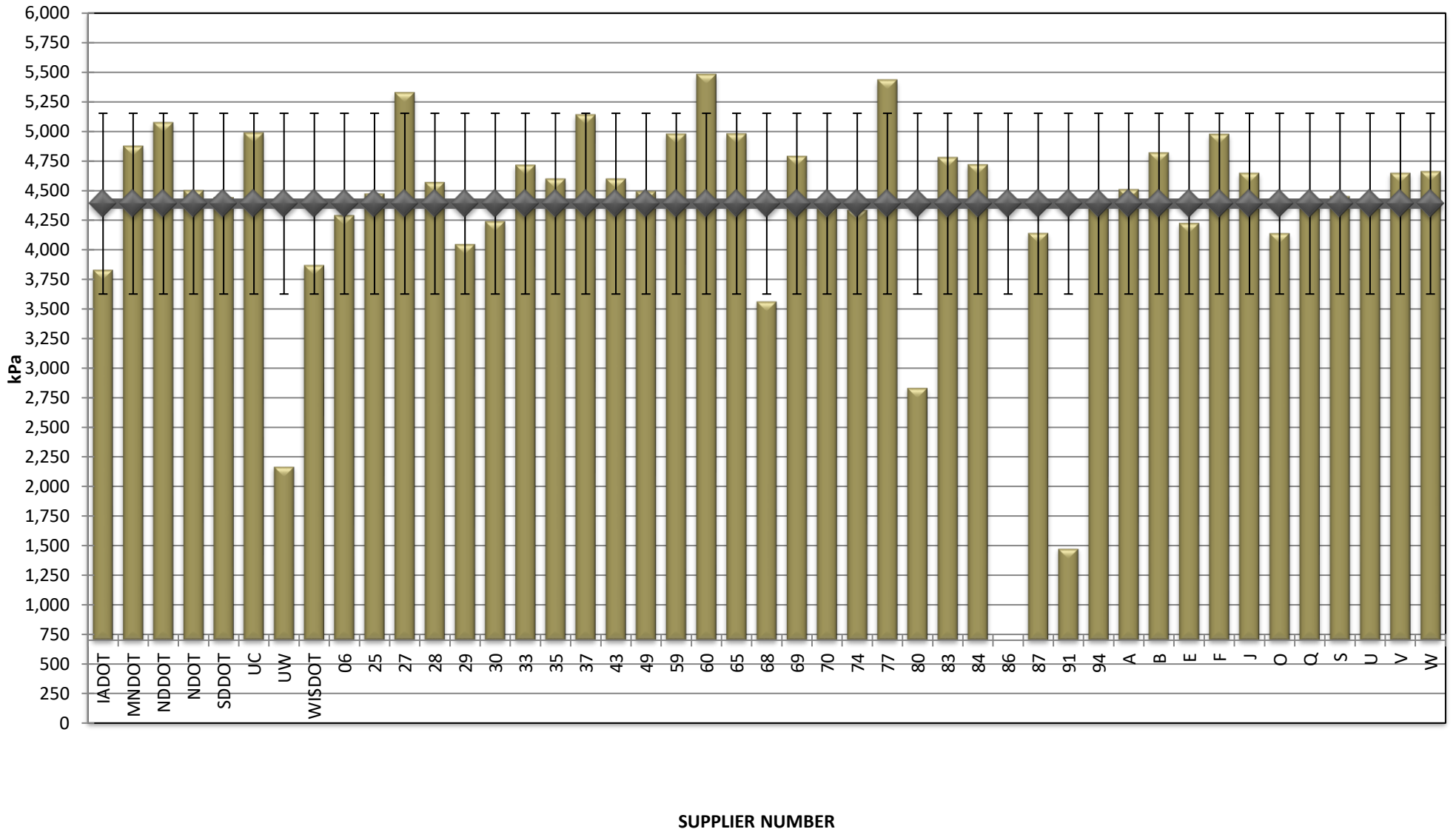
COMBINED STATE BINDER GROUP ROUND ROBIN  
SUMMARY B 2021-3  
PG 58H-28

DSR - RTFO



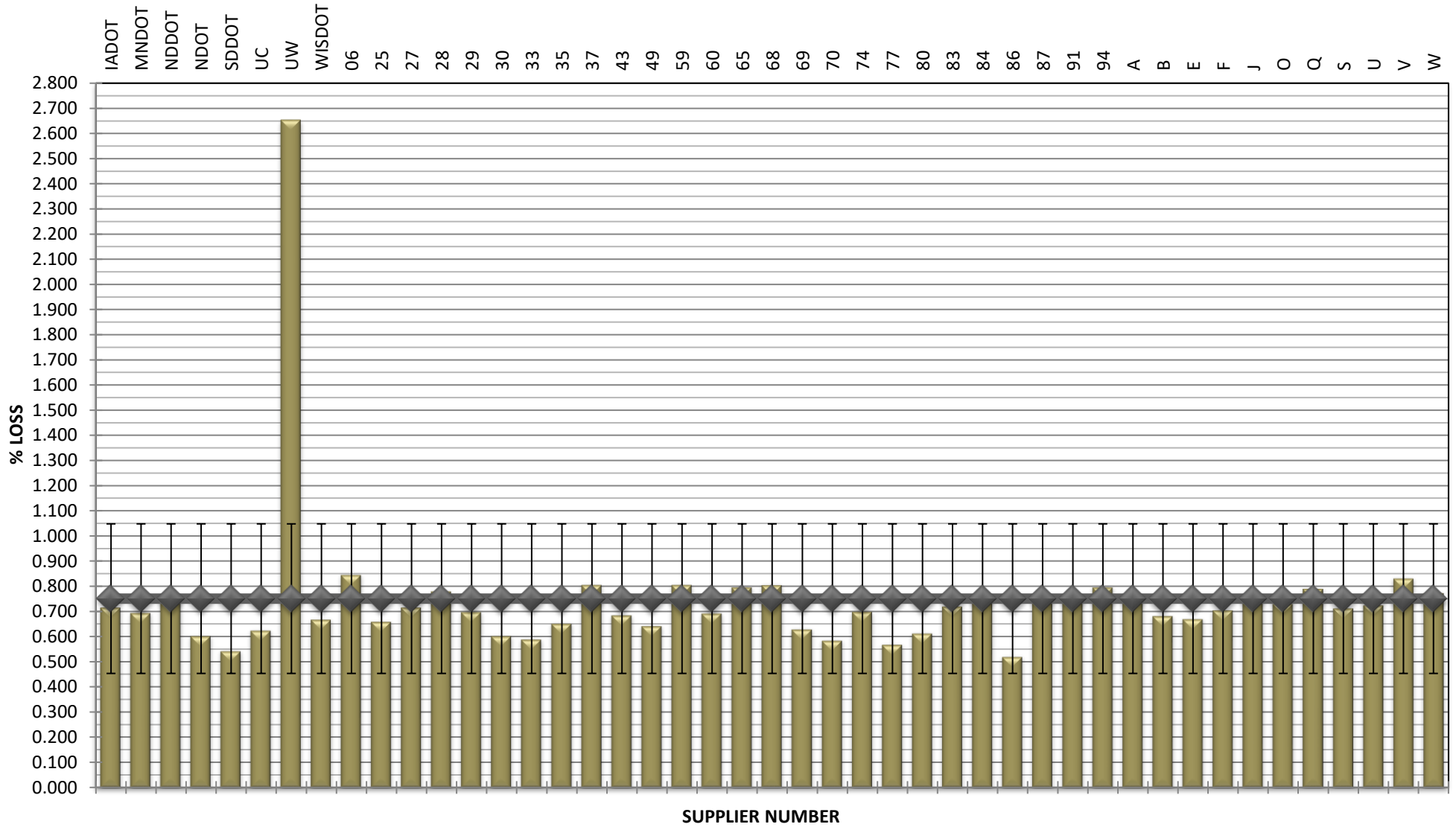
**COMBINED STATE BINDER GROUP ROUND ROBIN  
SUMMARY B 2021-3  
PG 58H-28**

**DSR - PAV**



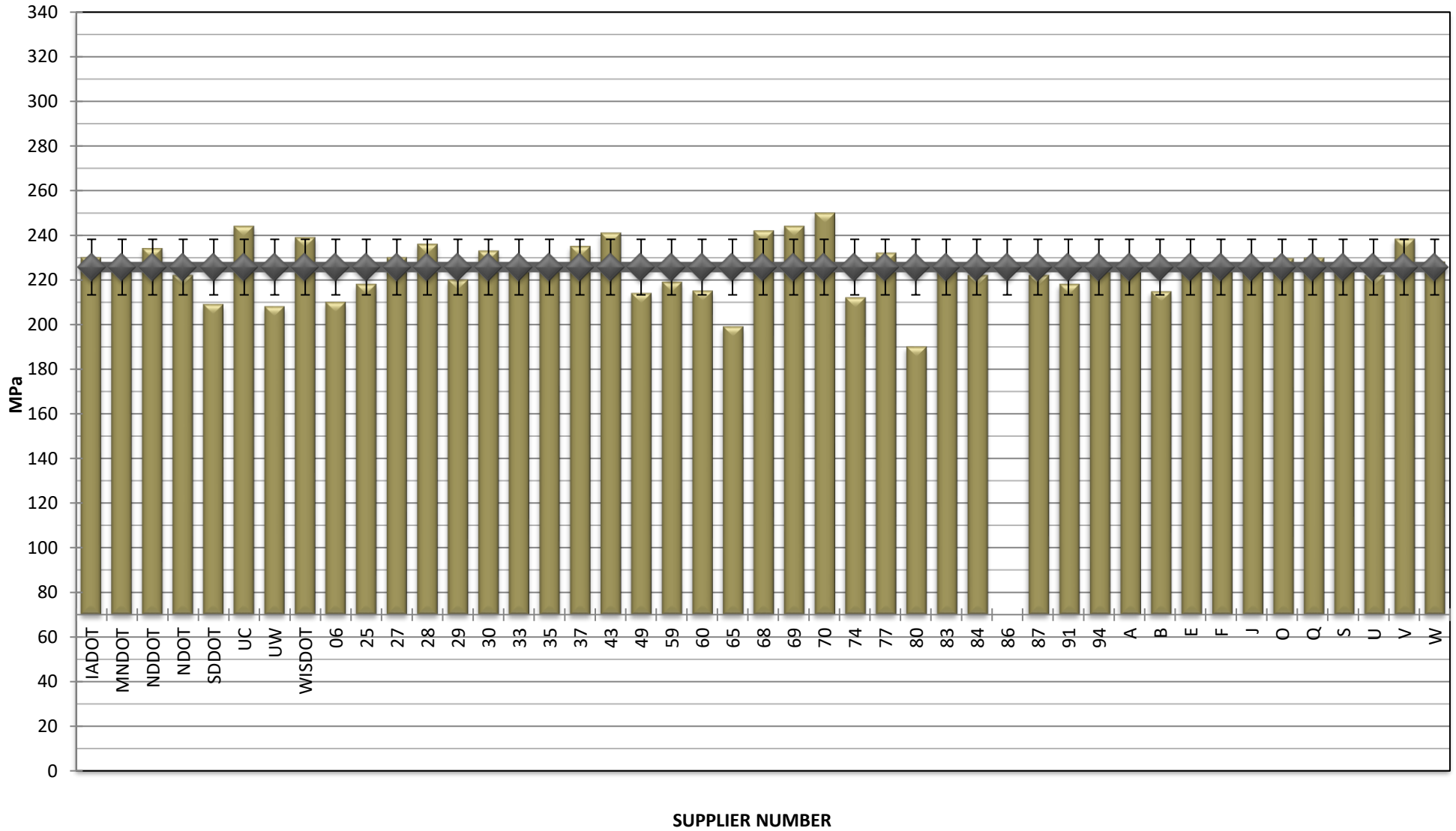
**COMBINED STATE BINDER GROUP ROUND ROBIN  
SUMMARY B 2021-3  
PG 58H-28**

**RTFO MASS LOSS**



**COMBINED STATE BINDER GROUP ROUND ROBIN  
SUMMARY B 2021-3  
PG 58H-28**

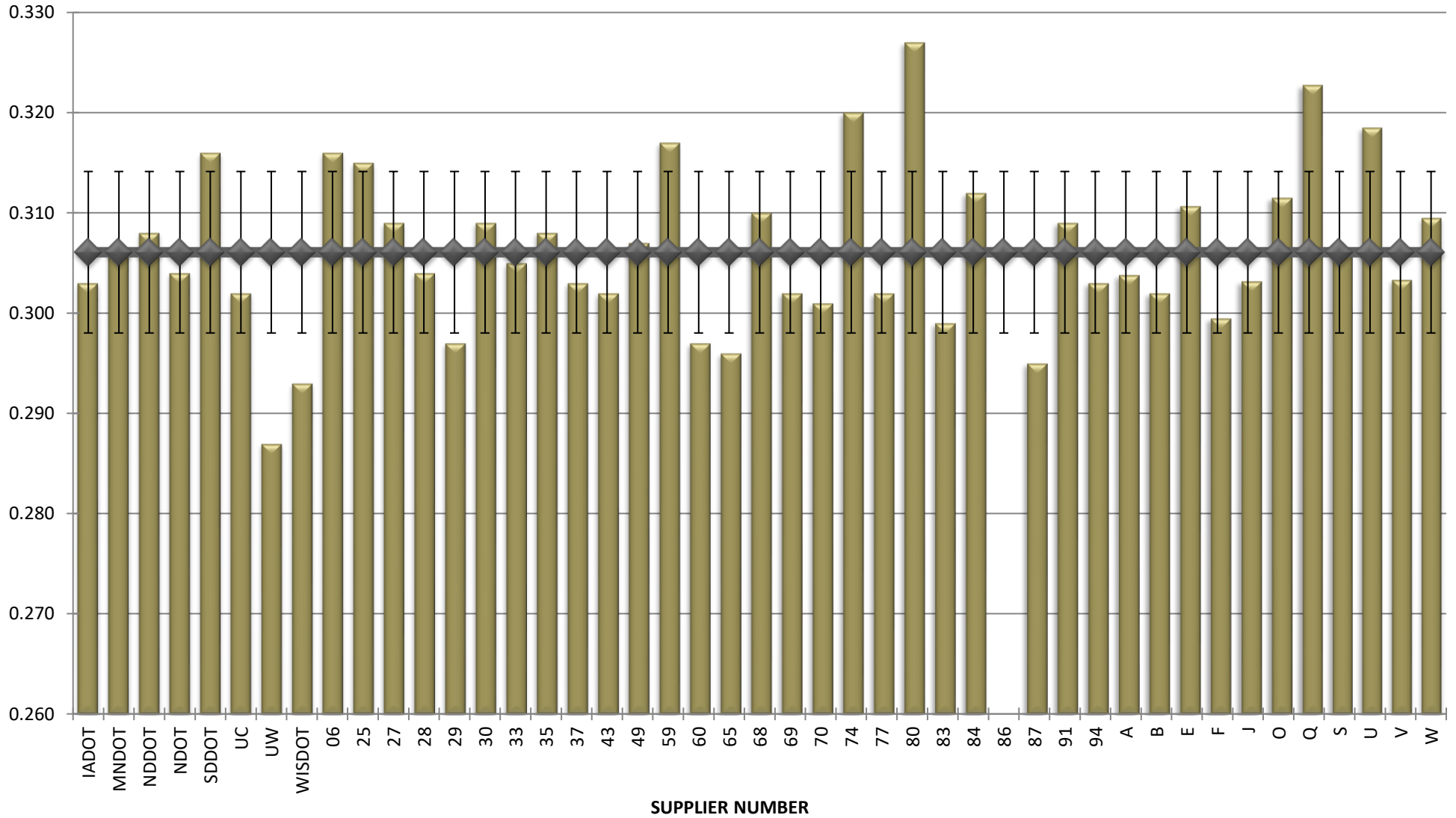
**BBR STIFFNESS**





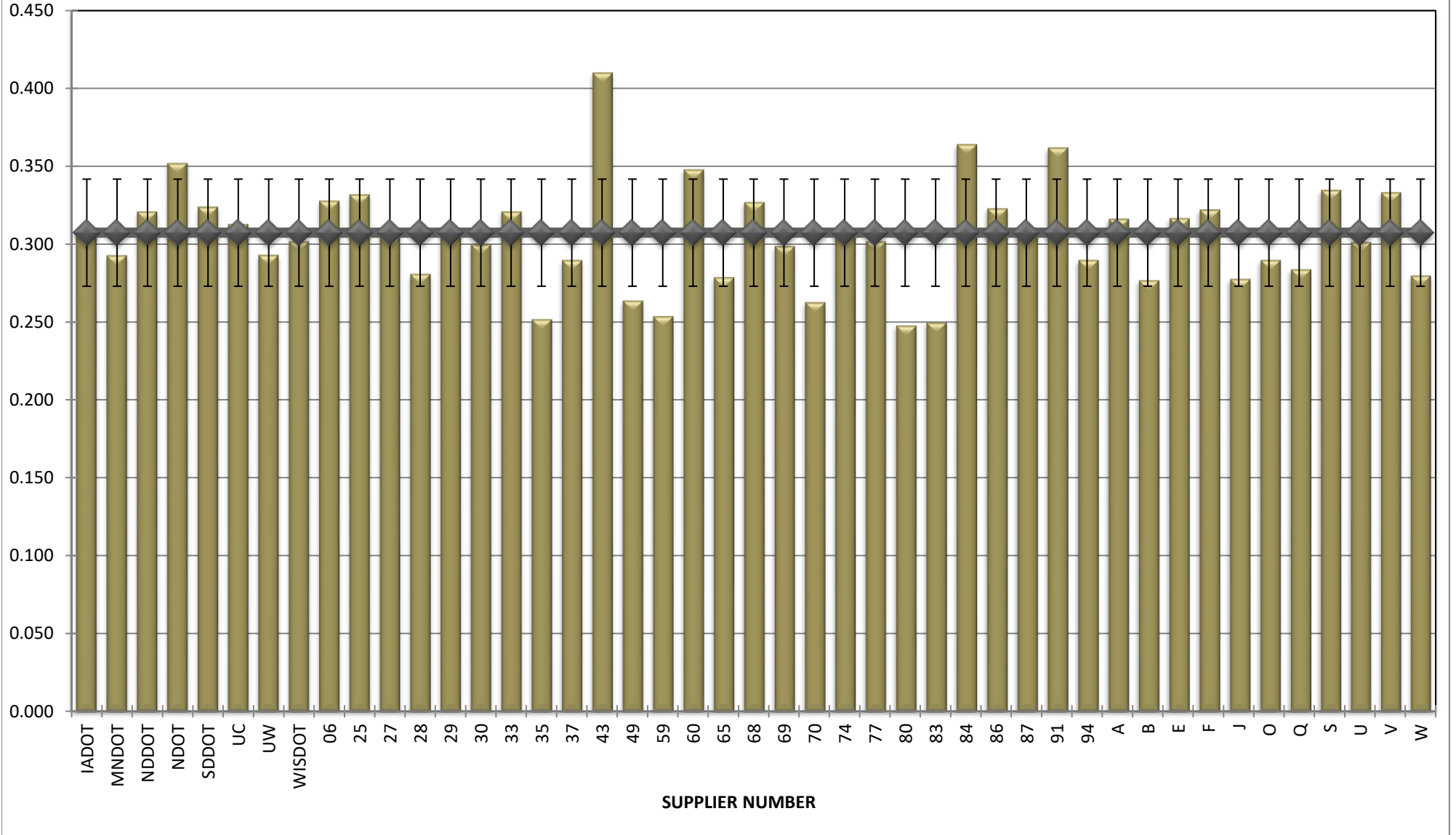
**COMBINED STATE BINDER GROUP ROUND ROBIN  
SUMMARY B 2021-3  
PG 58H-28**

**BBR m-VALUE**



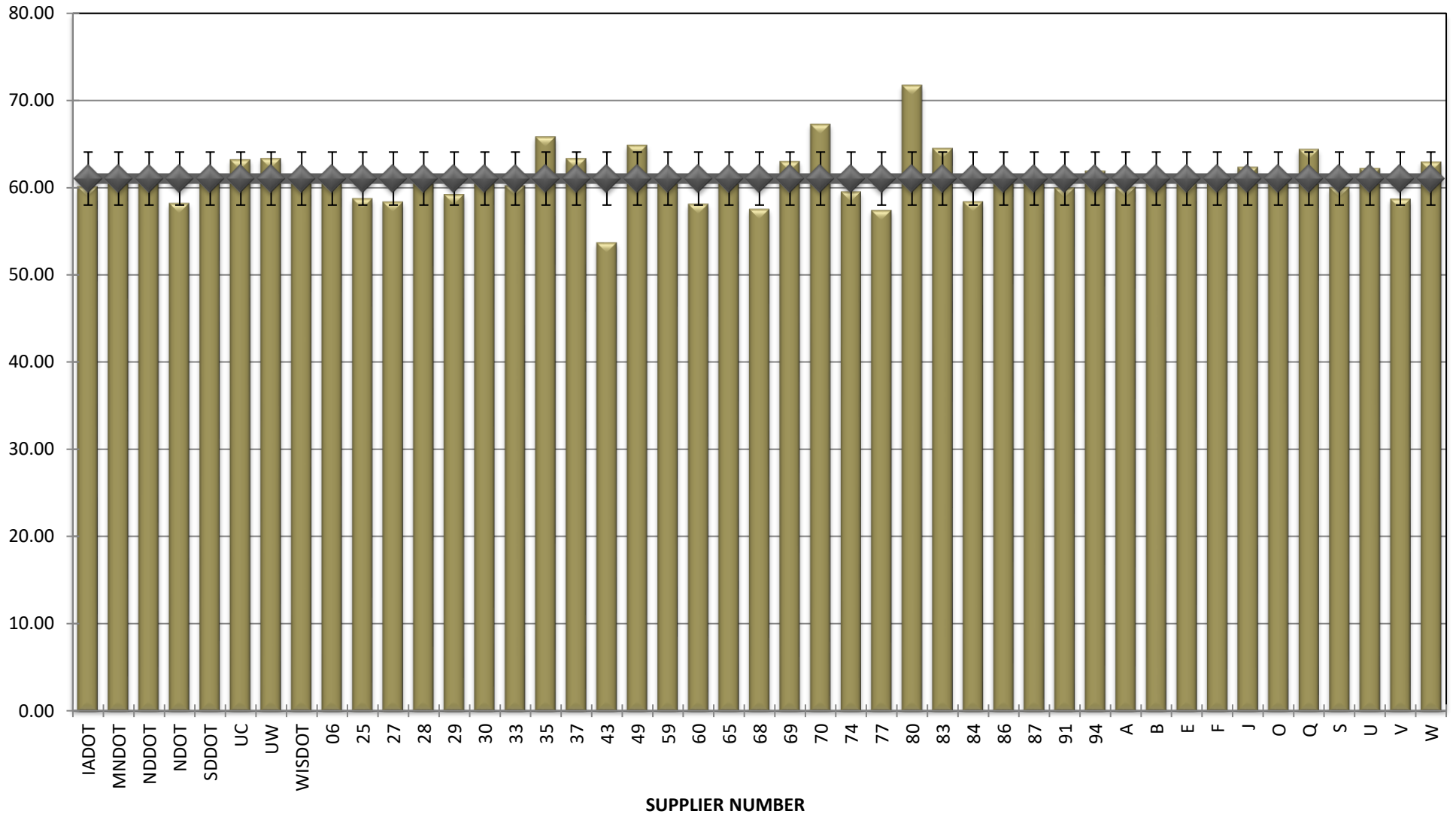
**COMBINED STATE BINDER GROUP ROUND ROBIN  
SUMMARY B 2021-3  
PG 58H-28**

**Jnr @ 100 Pa**



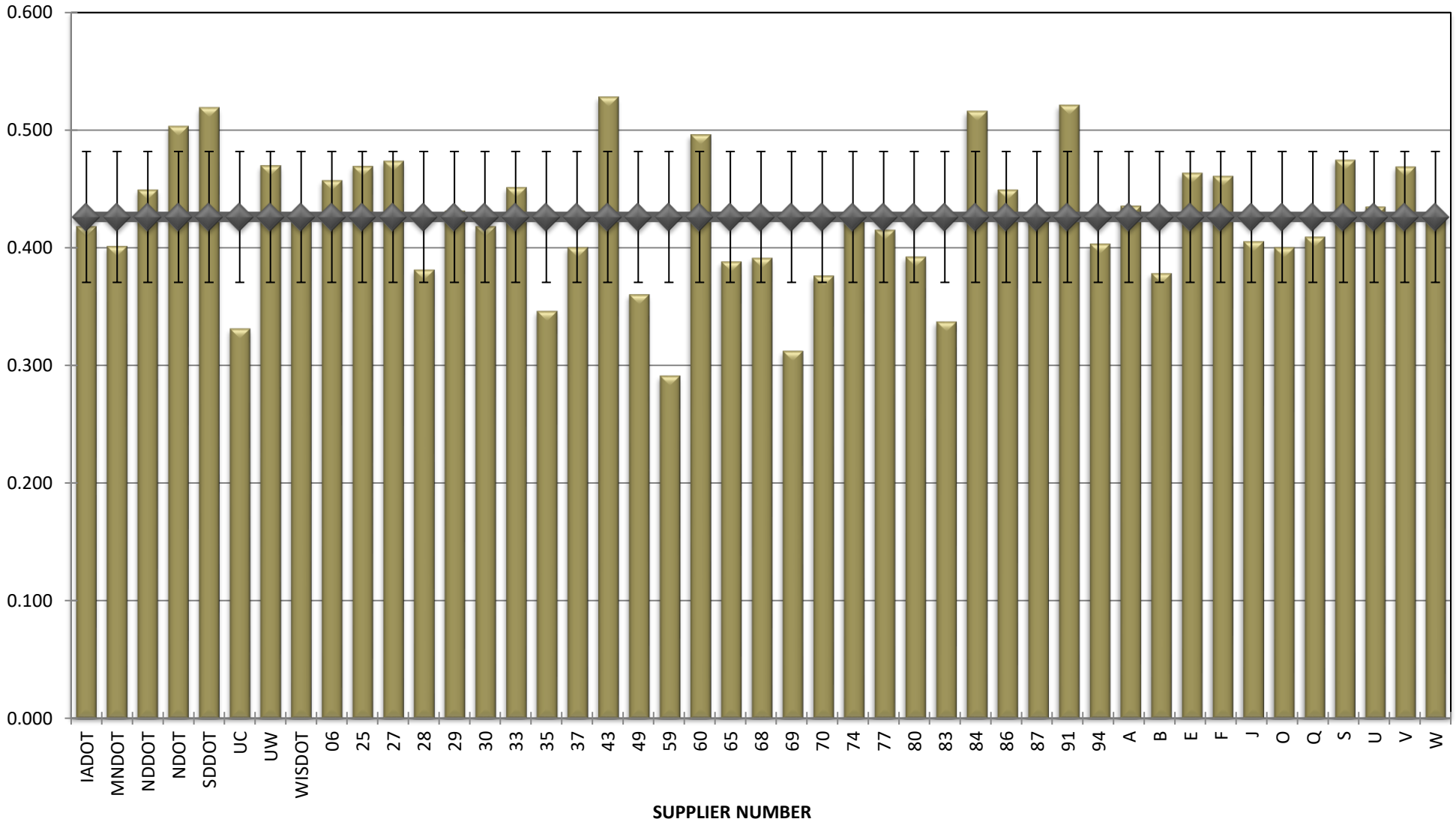
**COMBINED STATE BINDER GROUP ROUND ROBIN  
SUMMARY B 2021-3  
PG 58H-28**

**% Recovery @ 100 Pa**



**COMBINED STATE BINDER GROUP ROUND ROBIN  
SUMMARY B 2021-3  
PG 58H-28**

**Jnr @ 3200 Pa**



**COMBINED STATE BINDER GROUP ROUND ROBIN  
SUMMARY B 2021-3  
PG 58H-28**

**% Recovery @ 3200 Pa**

